

# ANNEX G TO THE FAIRFIELD COUNTY EMERGENCY OPERATIONS PLAN

## RESCUE SERVICE

### I. AUTHORITIES AND REFERENCES

#### A. Purpose

To provide for the coordination and use of all the rescue organization, personnel and equipment in the county during a disaster situation and employ rescue assets of mutual aid, State and Federal resources, as required.

#### B. Authority

1. Fairfield County Ordinance No. 487, signed May 9, 2005.
2. South Carolina Legislative Act Number 199, July 30, 1979.
3. Fairfield County Mitigation Plan

#### C. Definition

**RESCUE SERVICE**--Composed of the rescue station, its personnel, facilities and resources at county level, including local government, volunteer organizations and, upon request, the appropriate State agencies.

### II. SITUATION AND ASSUMPTIONS

#### A. Situation

1. Fairfield County is subject to disasters (*natural, technological, or terrorist act*) that could result in a need for increased rescue operations greatly affect the public health and result in a large number of deaths and/or injuries and damage. While Fairfield County has the capability and adequate resources to meet routine needs, during a disaster problems are multiplied and made more complex.
2. Fairfield County is designated as a host county, and as such, will receive a large number of evacuees from surrounding counties. In addition, Fairfield County has the responsibility of maintaining a radiological monitoring and reporting capability.

#### B. Assumptions

1. Existing Rescue personnel and equipment will be able to cope with most emergency situations through the use of existing mutual aid agreements. When additional support is required, assistance can be obtained from state and federal agencies.

### III. MISSION

To provide a trained and well-equipped organization whose duties are to locate, remove or release persons trapped under debris; to administer first aid; to transport litter; to recover bodies; and to maintain a radiological monitoring and reporting team.

## **IV. CONCEPT OF OPERATIONS**

### **A. General**

1. Activities will be directed and coordinated from the Fairfield County Emergency Operations Center (*EOC*).
2. The Chief, Fairfield County Rescue Squad, has the overall responsibility for mission assignments and coordination of rescue forces during disasters.
3. The FCRS will work under the National Incident Command system which will be set up on all incidents and become a unified command structure as additional units arrive.
4. If a Rescue Squad member is first on scene, he will act as the on-scene Commander. If a higher ranking member arrives, command will be transferred to highest rank. Depending on the type of incident, command would be transferred when the appropriate discipline arrives.
5. The FCRS has the capability to communicate with all agencies. Once arriving on scene a command post will set up with communications. All members will be instructed to communicate on a designated channel and all communication will go through command post.
6. In the event of an incident involving hazardous materials, a hot, warm, or cold zone will be established and handled through the fire service.
7. If needed, the Rescue Squad can assist coroner with the transport of bodies. EMS is responsible for all other patient transport.
8. State forces used in support of this Plan will be committed on a mission-type basis.
9. All Rescue Squad personnel will be trained on the principles of the National Incident Management System (NIMS) and integrate those principles into all Rescue Squad planning and response operations.

### **B. Actions by Phases of Emergency Management**

The following actions are common to all rescue squads during the four (4) phases listed below and should be coordinated through the Chief, Fairfield County Rescue Squad:

#### **1. Preparedness**

- a. Develop procedures to implement this Plan.
- b. Identify, train and assign personnel to radiological monitoring teams and response teams as required.
- c. Develop and be prepared to implement an accelerated training program to include radiological monitoring.

- d. Monthly, train personnel in search and rescue techniques.
- e. Identify potential hazardous areas.
- f. Maintain agreements and working relationships with supporting agencies/departments.
- g. Determine locations of shelters to be used by assigned personnel.
- h. Ensure Rescue Squad personnel integrate NIMS principles in all planning. As a minimum, the primary officers for Rescue Squad will complete FEMA's NIMS Awareness Course, or an equivalent course.

2. **Response**

- a. Maintain liaison with the Fairfield County Emergency Operations Center (EOC).
- b. Perform rescue duties as required.
- c. Perform radiological monitoring assignments as directed.
- d. Evaluate all available information concerning the nature and extent of search and rescue needs in the affected area(s).

3. **Recovery**

- a. Maintain liaison with the EOC.
- b. Be prepared to provide rescue functions within the affected area until conditions return to normal.
- c. Assist in other emergency functions when feasible.

4. **Mitigation**

- 1. Identify resources including personnel and equipment.

V. **ORGANIZATION AND ASSIGNMENT OF RESPONSIBILITIES**

A. **Organizations**

- 1. *See Organization Chart, Appendix 1.*
- 2. The Fairfield County Rescue Squad Chief is responsible for coordinating the Rescue Service activities of the following forces when they are requested to support the conduct of operations under this Plan:

a. **Local Government**

- (1) Fairfield County Rescue Squad

**b. State Government**

- (1) South Carolina Department of Natural Resources
- (2) Other state agencies/departments, as necessary

**B. Responsibilities**

1. Develop procedures to implement this Plan.
2. Identify, train and assign personnel to radiological monitoring teams and response teams as required.
3. Develop and be prepared to implement an accelerated training program to include radiological monitoring.
4. Train personnel in search and rescue techniques.
5. Identify potential hazardous areas.
6. Maintain agreements and working relationships with supporting agencies/departments.
7. Determine locations of shelters to be used by assigned personnel.

**VI. ADMINISTRATION AND LOGISTICS**

**A. Administration**

Initial situation reports will be submitted to the Chief, Fairfield County Rescue Squad, as soon as practicable. Reports will be consolidated and submitted to the Director, Fairfield County Emergency Management Department, for analysis and further distribution and will include, but not be limited to, the following:

1. Type rescue
2. Damage
3. Action taken
4. Casualties incurred
5. Nature and extent of any assistance required

**B. Logistics**

Rescue units will utilize supplies, operational aids and transportation organic to their organization. Additional supplies, transportation and manpower required will be requested through the EOC. *See Appendix 3.*

**VII. DIRECTION AND CONTROL**

- A.** Rescue activities will be coordinated from the Fairfield County Emergency Operations Center (*EOC*).

- B.** The Fairfield County EOC will be located at one of the following sites and will be announced by the Fairfield County Emergency Management Department at the time of activation:
1. **Primary**---Fairfield County Governmental Complex located at 100 Tidewater Dr, Winnsboro, SC.
  2. **Alternate**--Fairfield County Governmental Complex located at 350 Columbia Rd, Winnsboro, SC.
- C.** Rescue operations will be directed over the county Rescue Radio Communications Net; Fire Department Net; Emergency Medical Service (*EMS*) Net and telephone. *See Appendix 4.*
- D.** Verbal mutual aid agreements have been made between Fairfield County Rescue Squad and rescue squads in adjacent counties; Emergency Medical Service (*EMS*); Department of Natural Resources and the Forestry Commission, to aid each other as required.
- E. Line of Succession**
1. Chief, Fairfield County Rescue Squad
  2. Captains, Fairfield County Rescue Squad
  3. Lieutenant, Fairfield County Rescue Squad
  4. Director, Fairfield County Emergency Management Department

## **VIII. PLAN DEVELOPMENT AND MAINTENANCE**

### **A. Development**

1. The Chief of the Fairfield County Rescue Squad will be responsible for the development and maintenance of this annex and SOP.

### **B. Maintenance**

1. This annex will be reviewed annually.
2. This annex will be updated as necessary, based upon deficiencies identified by drills and exercises, changes in local government structure, or technological changes, etc.

---

Chief, Fairfield County Rescue Squad

---

Date

---

Director, Fairfield County Emergency  
Management Department

---

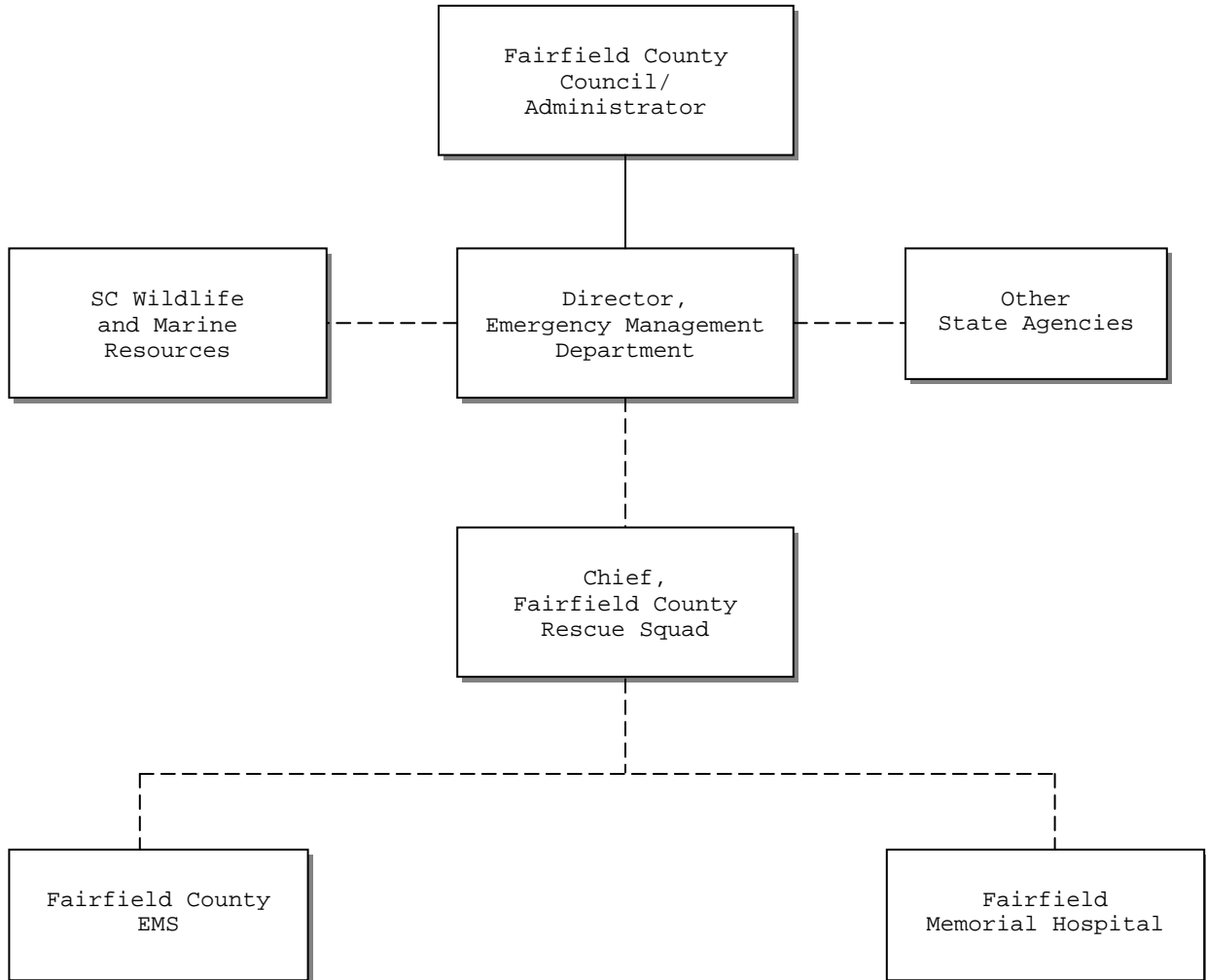
Date

**APPENDICES:**

- 1. Organization Chart**
- 2. Alert List**
- 3. Resources List**
- 4. Communications Net**
- 5. Host Area Requirements Statement**

**APPENDIX 1 TO ANNEX G—ORGANIZATION CHART**

**FAIRFIELD COUNTY**

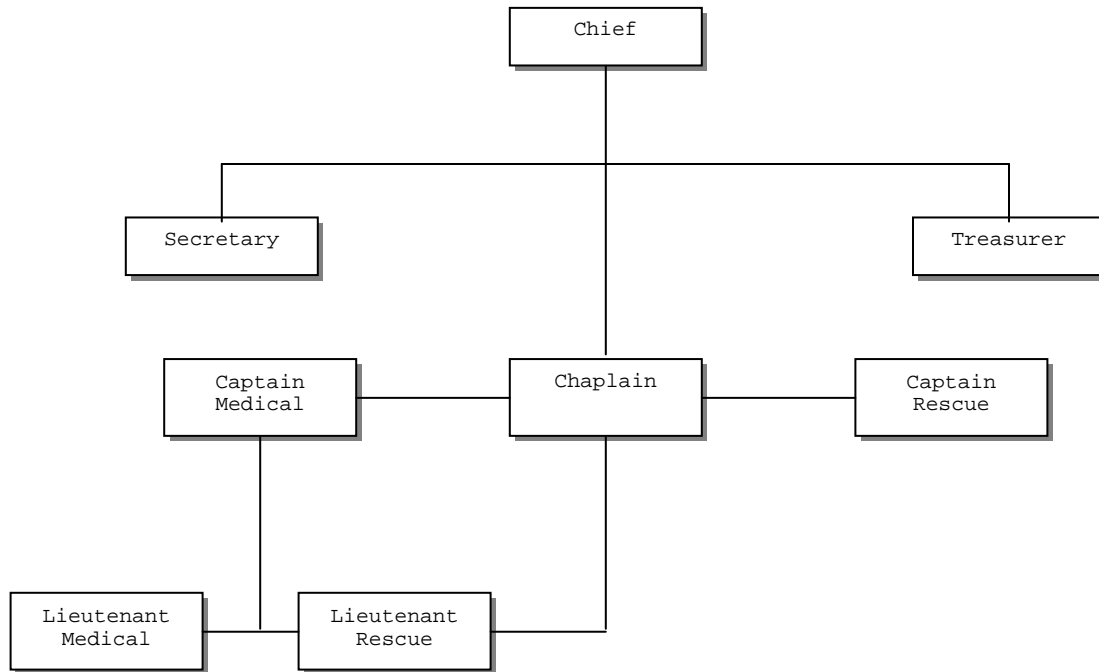


\_\_\_\_\_ **Direction**

- - - - - **Coordination**

**ATTACHMENT 1-A TO ANNEX G—RESCUE SQUAD ORGANIZATION CHART**  
*(Internal)*

**FAIRFIELD COUNTY**



\_\_\_\_\_ **Direction**

----- **Coordination**



**APPENDIX 2 TO ANNEX G--ALERT LIST, RESCUE SERVICE  
FAIRFIELD COUNTY EMERGENCY OPERATION PLAN**

**FAIRFIELD COUNTY**

**TITLE**

Chief, Fairfield County Rescue Squad

Fairfield County Rescue Squad

***\*ALL TELEPHONE NUMBERS ARE KEPT CURRENT IN OUR COUNTY ALERT  
LIST SOP, DISTRIBUTED TO APPROPRIATE AGENCIES.***

**APPENDIX 3 TO ANNEX G--RESOURCE LIST, RESCUE SERVICE  
FAIRFIELD COUNTY EMERGENCY OPERATIONS PLAN**

**FAIRFIELD COUNTY**

**Rescue Squad**

1. Vehicles with sirens and P.A. systems -- 4
2. Personnel -- 35 volunteers
3. Walkie-talkies -- 35
4. Generators -- 4 - 10KW
5. Other Resources:
  - a. 2 - Hurst Tools / 1 - Power Hawk
  - b. Various power tools for extraction
  - c. 1 – Kubota ATV
  - d. Lighting systems with generators
  - e. Rough terrain stretchers and equipment
  - f. 4 - Flat bottom boats with engines and trailers
  - g. 1 - Dive boat and diving equipment for 4 divers
  - h. 1 - Four wheel drive vehicle
  - i. 1 – Command vehicle
  - j. Radios located in volunteer members' vehicle
  - k. 2 - 4 wheeler
  - l. 1 - 24ft. Pontoon boat

**APPENDIX 4 TO ANNEX G--RESCUE SERVICE--COMMUNICATIONS NET**

**FAIRFIELD COUNTY**

**EMS/RESCUE FREQUENCY**

155.220 MHz

155.340 MHz (Hospital)

800 MHz

EMS – 453.5125 transmitter

458.5126 receiver

DPL-23

**APPENDIX 5 TO ANNEX G--RESCUE SERVICE--HOST AREA REQUIREMENTS  
STATEMENT**

**FAIRFIELD COUNTY**

**RESCUE SERVICE**

1. **Personnel**

To be determined at time of emergency.

2. **Equipment**

To be determined at time of emergency.

3. **Supplies**

To be determined at time of emergency.