

ANNEX B TO FAIRFIELD COUNTY EMERGENCY OPERATIONS PLAN

COMMUNICATIONS

I. AUTHORITIES AND REFERENCES

A. Purpose

To provide for the coordination and use of all available means of communication during emergencies resulting from natural or technological disasters, or terrorism.

B. Authority

1. Fairfield County Ordinance No. 487, signed May 9, 2005.
2. South Carolina Legislative Act Number 199, July 30, 1979.
3. Fairfield County Mitigation Plan

C. Definitions

1. **AMATEUR RADIO EMERGENCY SERVICE (ARES)**--A group of amateur radio operators organized by the American Radio Relay League to provide emergency communications wherever and for whomever it may be needed.
2. **CITIZENS BAND (CB/REACT)**--A radio service authorized by the Federal Communications Commission to provide short range communications for individuals.
3. **ELECTROMAGNETIC PULSE (EMP)**--A short, energetic pulse of electromagnetic radiation emitted when a nuclear weapon is detonated.
4. **EMERGENCY ALERT SYSTEM (EAS)**--Emergency information dissemination system which includes the electronic news media, radio stations and television stations. Through this system, the public is warned of impending danger (resulting from natural, technological or terrorist act) and is given guidance for protection of life and property and other vital information.
5. **LOCAL GOVERNMENT RADIO (LGR)**--A radio service authorized by The Federal Communications Commission to provide governmental entities with a system for any type of governmental communications.
6. **RADIO AMATEUR CIVIL EMERGENCY SERVICE (RACES)**--A group of amateur radio operators authorized by the Federal Communications Commission to provide emergency Civil Defense communications.

II. SITUATION AND ASSUMPTIONS

A. Situation

1. Fairfield County is subject to disasters (*natural, technological, or terrorist act*) that could greatly affect the public health and result in a large number of deaths and/or injuries and damage. While Fairfield County has the capability and adequate resources to meet routine needs, during a disaster problems are multiplied and made more complex. A disaster could tax the capability and resources of Fairfield County.
2. The Communication Center is located at 350 Columbia Rd, Winnsboro, SC 29180. It is staffed on a twenty four (24) hour basis. Equipment is available to provide communications necessary for emergency operations.

B. Assumption

1. The EOC will be activated upon the threat or occurrence of a major emergency/disaster and designated personnel will be asked to report to the Emergency Operations Center in a timely fashion.
2. The EOC's facility and equipment are adequate for coordinating county-wide emergency operations.
3. Sufficient procedures have been developed to effectively direct and control disaster operations/recovery.
4. Emergency operations and coordination at all levels of government will be carried out according to plans and procedures.

III. MISSION

To provide and coordinate communications support available for direction and control during any emergency situation within Fairfield County.

IV. CONCEPT OF OPERATIONS

A. General

1. Activities will be directed and coordinated from the Fairfield County Emergency Operations Center (EOC), or from Fairfield County Public Safety Answering Point (PSAP) depending upon the situation.
2. The Emergency Management Director has overall responsibility for the coordination of communication activities during a disaster situation. The Director will be responsible for establishing and maintaining the Fairfield County emergency radio net(s) to include communications with municipalities and adjacent counties.
3. The Communications Coordinators of the various municipalities will

develop and maintain all communication activities in their respective jurisdictions.

4. The primary means of communications will be by telephone. The county two-way radio system is designated as a principal system to be used for direction and control activities. It provides voice communications between EOC and all local and supporting agencies with emergency assignments during a disaster to include shelters when opened. Primary communications system between the County EOC and State EOC/FEOC will be via the telephone. The secondary communications systems will be the SC LGR Network, the Satellite Radio/Phone System and the PAL 800 MHz.
5. Operators from each agency of local government will operate their own radio systems. Back-up communications support will normally be by RACES and other Amateur and Citizens Band groups.
6. Shelters will use telephones for primary communications and/or, if available, a reliable 2-way radio system for secondary communication.
7. When not using WebEOC, all written messages will be processed through the Message Center for **IN/OUT** logging process, then routed to the **ACTION** addressee by the most effective means according to assigned precedence.
8. All communications emergency staff will be trained on the principles of the National Incident Management System (NIMS) and integrate those principles into all communications planning and response operations.

B. Actions by Phases of Emergency Management

1. Preparedness

- a. Develop procedures to implement this annex to include alerting of communications staff.
- b. Assist, as required, the development and conduct of communications training.
- c. The communications emergency staff will participate in exercises as directed by appropriate local authority.
- d. Review requirements for additional equipment, supplies and resources and take action as appropriate.
- e. Ensure communications integrate NIMS principles in all planning. As a minimum, all communications staff will complete FEMA's NIMS Awareness Course, or an equivalent course.

2. Response

- a. When alerted by appropriate authority, the Emergency Management Director will notify the emergency communications staff.

- b. Assist the warning officer in alerting other emergency staff as necessary.
See Appendix 2.
- c. Activate all emergency communications systems.
- d. Establish communications between EOC and shelters as opened.
- f. Notify SCEMD of EOC activation and operational readiness status.

3. **Recovery**

Emergency communication systems will continue to function until normal communications have been restored.

4. **Mitigation**

- a. Develop an adequate survivable communications system.
- b. Develop coordinated communications procedures to meet the needs and requirements of Fairfield County.
- c. Periodically review the system and formulate plans for improvement as necessary.

V. ORGANIZATION AND ASSIGNMENT OF RESPONSIBILITIES

A. Organization

- 1. **See Appendix 1, Organization Chart**

B. Responsibilities

- 1. The Fairfield County Emergency Management Director is the coordinator for all coordinating communication activities of the following, when they are requested to support the operations under this plan.
 - a. **State** (Supporting agencies when available)
 - (1) State Law Enforcement Division (SLED)
 - (2) S. C. Forestry Commission
 - (3) S. C. Department of Natural Resources
 - (4) S. C. Department of Transportation (Radio Net)
 - (5) S. C. National Guard (Radio Net)
 - (6) State RACES Net
 - (7) S. C. EPM LGR Network
 - b. **County**
 - (1) County Sheriff Department (Radio Net)
 - (2) County Volunteer Fire Departments (Radio Net)
 - (3) County Emergency Medical Service--Rescue Squad (Radio Net)
 - (4) County RACES (Radio Net)
 - (5) County Public Works (Radio Net)

c. **Municipal**

- (1) Town of Ridgeway Police Department (Radio Net)
- (2) Town of Winnsboro Department of Public Safety (Police/Fire)
- (3) Town of Winnsboro Public Works (Radio Net)

2. The Emergency Management Director is responsible for the development and implementation of emergency communications during natural or technological disasters, or terrorist act. The Director must develop emergency measures to protect radio equipment from the Electromagnetic Pulse caused by a nuclear explosion. (*See Appendix 5*)

VI. ADMINISTRATION AND LOGISTICS

A. Administration

1. An initial status report will be made by the communications officer to the EOC as soon as practical.
2. All records generated during an emergency will be collected and filed in an orderly manner so a record of events is preserved for use in determining response costs, and updating emergency plan and procedures.
3. After action reports, as required, will be submitted to the Fairfield County Emergency Management Director.

B. Logistics

Communications related supplies and equipment will be those normally used by the agencies. Additional supplies and equipment will be requested through the Emergency Operations Center.

VII. DIRECTION AND CONTROL

1. Communication activities will be coordinated from the EOC or other designated facility.
2. The Fairfield County EOC will be located at one of the following sites and will be announced by the Fairfield County Emergency Management Department at the time of activation:
 - a. **Primary**-- is located at 100 Tidewater Dr, Winnsboro, SC.
 - b. **Alternate**--Fairfield County Governmental Complex is located at 350 Columbia Rd , Winnsboro, SC.
3. An emergency generator with a continuous natural gas fuel supply is on site at the primary EOC.
4. **Line of Succession**
 - a. Fairfield County Emergency Management Director
 - b. Fairfield County Emergency Management Deputy Director

- c. Telecommunications Supervisors

VIII. PLAN DEVELOPMENT AND MAINTENANCE

A. Development

The Fairfield County Emergency Management Director will be responsible for working with other agencies in the development, maintenance, and the improvement of this annex. Each agency tasked will develop standard operating procedures that address assigned tasks.

B. Maintenance

1. The Emergency Management Director will be responsible for ensuring that an annual review of the plan is conducted.
2. The plan will be updated, as necessary, based on deficiencies identified by drills and exercises, changes in local government structure, or technological changes, etc.

Fairfield County Emergency Management
Director

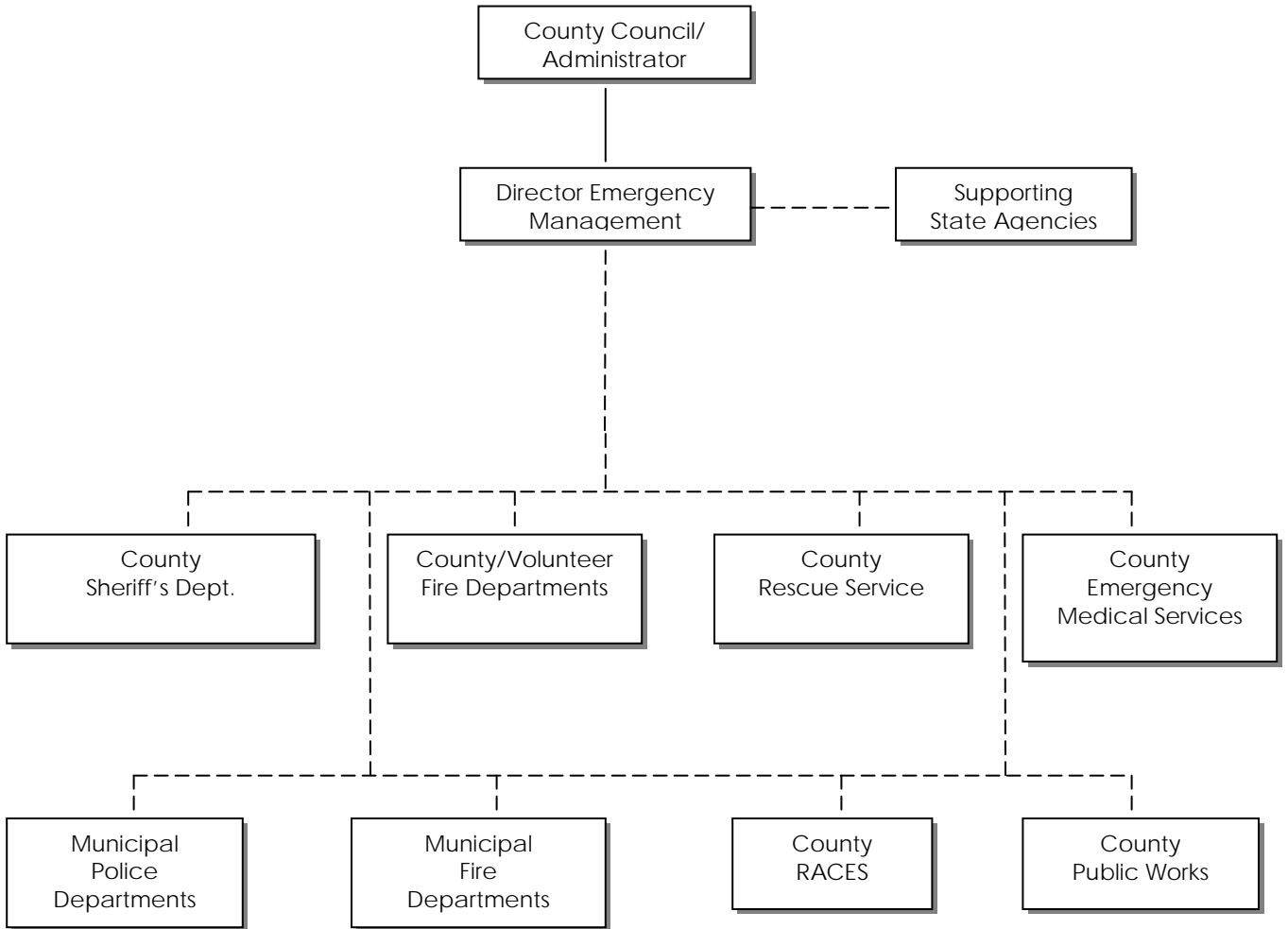
Date

APPENDICES:

- 1. Organizational Chart**
- 2. Alert List**
- 3. Chart of available communications and emergency function assignments**
- 4. Communications Net**
- 5. EMP Countermeasures**

APPENDIX 1 TO ANNEX B—ORGANIZATION CHART

FAIRFIELD COUNTY



————— **Direction**

- - - - - **Coordination**

APPENDIX 2 TO ANNEX B--COMMUNICATIONS ALERT LIST

TITLE

Emergency Management Director

Chairman, County Council

County Administrator

EMD Deputy Director

Telecommunications Supervisor

Public & Emergency Information Officer

Asst. Public Information Officer

Chief, Law Enforcement

Chief, Mass Care

Director, Fire Service

Chief, Transportation Service

Chief, Rescue Service

Chief, Supply Service

Chief, Emergency Medical Service (Ambulance) (EMS)

Chief, Engineering & Public Works

Chief, Radiological Defense Officer

Chief, Shelter Service

Chief, Damage Assessment

Mayor, Town of Winnsboro

Mayor, Town of Ridgeway

*****ALL TELEPHONE NUMBERS ARE KEPT CURRENT IN OUR COUNTY ALERT LIST SOP, DISTRIBUTED TO APPROPRIATE AGENCIES.***

APPENDIX 3 TO ANNEX B--CHART OF AVAILABLE COMMUNICATIONS IN THE EMERGENCY OPERATION CENTER

FAIRFIELD COUNTY

| | S H E R I F F | M U N I C I P A L P O L I C E | E M E R G E N C Y M E D I C A L | T E L E P H O N E | C O U N T Y G O V E R N M E N T | R A D I O | B R O A D C A S T M E D I A | F I R E C O U N T Y / R U R A L | R E S C U E | R A C E S A M A T E U R | C B / R E A C T | P S A P |
|----------------------------|---------------------------------|---|--|---|--|-----------------------|--|--|----------------------------|--|--------------------------------------|------------------|
| WARNING | S | S | | S | | S | S | S | S | | S | P |
| LAW ENFORCEMENT | P | S | | | | S | | | | | | |
| FIRE CONTROL | S | S | | | | | | P | | | S | |
| SHELTER | P | | | P | | | S | | | | S | |
| MESS (FOOD SERVICE) | S | S | S | S | | S | S | P | S | | | |
| EMERGENCY MEDICAL | | | S | S | | | | | P | | | |
| SEARCH & RESCUE | S | S | | S | | | S | S | P | | | |
| PUBLIC INFORMATION | | | | | S | | P | | | | | |
| RADIOLOGICAL MONITORING | S | S | P | S | | | | | | S | | |
| TRANSPORTATION | P | S | S | S | | S | | | | | | |

P = PRIMARY
S = SECONDARY

APPENDIX 4 TO ANNEX B, COMMUNICATIONS--COMMUNICATIONS NET

FAIRFIELD COUNTY

NETS

| | |
|--|------------------------------|
| Sheriff | 800 MHz |
| Ridgeway Police Department | 800 MHz |
| Winnsboro Department of Public Safety MHz | 800 MHz, 460.525 and 460.400 |

POLICE TALK-AROUND NET

460.050 MHz

EMS and RESCUE SQUAD FREQUENCY

EMS – 453.5125 Transmitter
458.5126 Receiver
DPL – 23
155.220 Backup

Rescue Squad - 155.220 MHz

LEA NET

155.525 MHz

FIRE DEPARTMENT

| | | |
|-----------------------------------|----------------|----------------------------|
| County Volunteer Fire Departments | 158.955 MHz Tx | 154.160 MHz Rx PL 173.8 |
|-----------------------------------|----------------|----------------------------|

| | |
|---------------------------------------|-------------|
| Winnsboro Department of Public Safety | 460.525 MHz |
|---------------------------------------|-------------|

APPENDIX 5 TO ANNEX B--(EMP) ELECTROMAGNETIC PULSE COUNTERMEASURES

FAIRFIELD COUNTY

ATTACK WARNING: (With or Without EMP devices installed)

Immediately turn off and disconnect from electrical supply, control wiring, and antenna(s), any radio and electronics equipment you hope to survive the impact of Electromagnetic Pulse caused by a nuclear explosion. Return equipment to service after an **ALL CLEAR** or a reasonable amount of time has passed after explosion. Electrical power is normal or power is being supplied by emergency generator.

For the private individual or business, as well as for smaller EOC's or alternates, it is worthwhile to consider intuitively effective ideas. For example, sensitive unit is much less vulnerable to EMP if the "power plug" is pulled and left a foot or so from the power source. Plan for putting small sensitive gear into metal containers--even foil wrapping or garbage cans are not improper.